

# Smart Switch Feeling Analyzer

小型卓上スイッチフィーリング試験機



デジテック株式会社

## MODEL - Tec-01F



Low price • high-performance !  
PC controlsystem desktop  
load testing equipment



- Dome Switch
- Tactile Switch
- Silicone Rubber SW
- Double Click SW

etc...

This is the compact desktop switch feeling analyzer which was developed under the concept of "Low Price" • "Easy to use" • "High Functions". The detailed test movement settlement can be arranged on the PC, the colleration between the load and displacement can be displayed by the wave graphic diagram. And the peak value • bottom value • click value etc... by the wave graphic diagram can be researched at any point as you like. Several functions like "Piled wave type measurement with real time", "functions of re-draw" are equipped it is easy to make the 2nd proceeding of test date and issue the report by the export functions to EXCEL at 30 patterns and over.



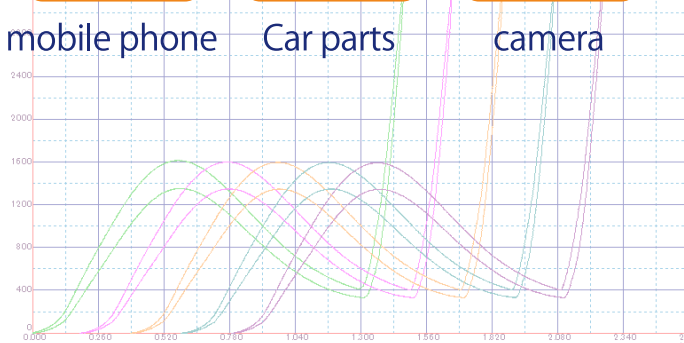
mobile phone



Car parts



camera



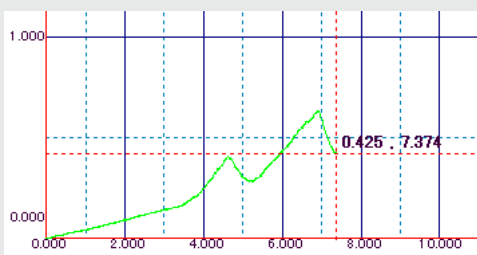
- Can be set at the narrow space by the compact design
- Can control the analyzer at 0.01mm unit by the connection to PC
- Can grasp the measurement contents visually by displaying the wave data
- Can total automatically by the judgment of "OK - NG" at the settlement of regulated value
- Can analyze the high-accuracy data and handle easily by PC control
- Can register your favorite pick-up points in the wave data
- The high data analyzed functions like the wave graphic diagram • the display of the poled wave graphic diagram etc are equipped by the software which is filled with the plenty of ideas
- There are the language-change functions of Japanese • English • Korean • Chinese, so can be available for several production countries and places.

### Option

All operations can be arranged on PC.  
In case of the connection of OPTION Controller, the rise • descent at 3 step speed and test staring, test stopping can be operated by this controller.

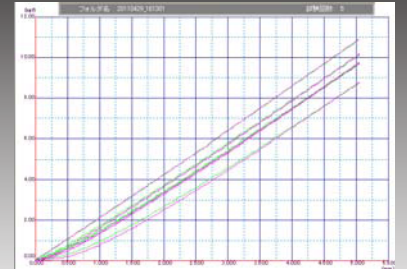
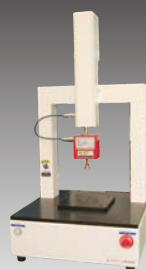


### Wave Re-draw Functions



The test results can be displayed every time, and can display the movies of wave graphic diagram at your favorite speed. The change of the displaying speed and stopping at one time can be operated in Playing, the wave graphic diagram can be checked every time.

### Piled wave measurement with Real time



This can compare several data by piling the test result wave graphic diagram after testing, and the continuous testing can be operated with piling the wave graphic diagram when testing. So you can check the tendency of characteristic change of work piece when you are testing.

## Main characteristic

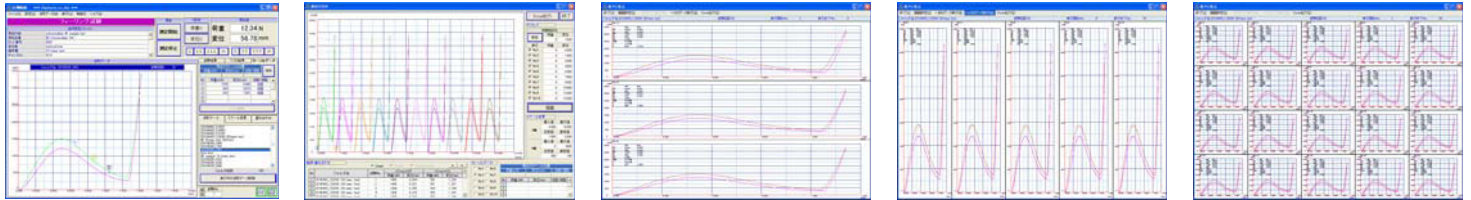
This analyzer measures the Operational feeling peak value•bottom value•click value hysteresis value etc... by the wave graphic diagram and keep the test results which was measured. automatically.

The test results can displayed every time, and there are the functions that have the description of piled wave graphic diagram•registered functions at favorite point on the wave graphic diagram•functions that several test results can display at the same time•analyzed functions of the piled wave diagram graphic•cursor displayed functions of graphic wave•Redraw functions that play and one-stop the wave diagram graphic at your favorite speed etc, and can support the quality control of the customer's products.

## Origin Detection Function and deflection revision function

The origin detection function is equipped, and can detect the origin point and memory the surface of the test table and the standard point of the jig which is used automatically. And the deflection revision function is equipped, revise and measure a little deflection of the displacement automatically, which is occurred to the analyzer or load cell (load sensor) itself when the work piece is tested. By this function, the problem of the displacement tolerance which may lead to the large tolerance rate in case of the small stroke work piece can be cleared, and can measure high-accurately.

## Software



You can operate the starting and stopping of testing, control of inching the raise•descent of 0.01mm•0.10mm•1.00mm, control of continuous raise•descent, continuous control of raise•descent, return of test starting point etc.

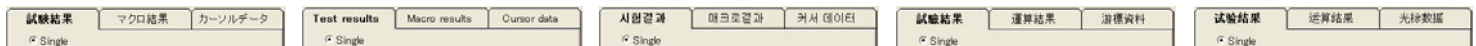
You can display each wave diagram graphic of the test results on the graphic areas at the same time, and compare the display which is under "off-set" situation.

You can test efficiently and save the testing time with the easy operation by high-analyzed capacity and several drawing lay-out and functions of auto report making.

## Functions of auto report making

The functions to export to EXCEL by several layouts are equipped in standard, can make the report whose favorite layouts are over 30 kinds. All reports are exported to EXCEL once, so it is easy to make the 2nd proceeding easily.

## Functions of language-changeover



You can choose the language among Japanese•English•Korean•Chinese every time for this application software.

And any language can be suitable for making the report, not for measuring only.

So when the tested data is passed to other countries, you can choose favorite language and make the report every time.

## Tec Specification

Model	Tec-O1F	Tec-O2F	Tec-O5F
Capacity	10N/1kgf	20N/2kgf	50N/5kgf
Load resolution	0.001N/0.1gf	0.01N/1gf	0.01N/1gf
Length resolution	±0.2% f.s		
Measuring accuracy	0.01mm (0.001mm)		
Displacement accuracy	±50 μm+0.0001L (mm)		
Test speed	0.1 ~ 600 mm/min		
Max test length	Height adjustment: 60mm Measurement axis: 80mm		
Examination contents	Peak value, Bottom value, Click load, Click%, ON/OFF point value etc...		
Maximum repeatedly	99999 times		
Data storage	1000 data		
Control scheme	Full control by personal computer		
Content of control	0.01mm/0.10mm/1.00mmInching Speed set movement, Start position, return Test, start Test stop		
Protection circuit	Limit stop, Over load stop, Emergency switch		
Transportation	Precise ball screw, Stepping motor		
Table size	W300 X D300 (Between pillars220) mm		
Communication method	USB Connection		
Dimension	W310 X H580 X D310 mm		
Weight	app. 20kg		
Power source	AC100~240V		

\* It can make also except standard specification.

\* Specification may be changed without a preliminary announcement.

## The main features

1. Registration Test Conditions (unlimited, according to HDD capacity)
2. Registration Test Result (unlimited, according to HDD capacity)
3. Functions of test results of wave data reading
4. Real time wave diagram graphic comparison measurement by piled wave measurement function
5. Wave diagram graphic Redraw functions with speed adjustable functions
6. Enlarging display functions of area appointment in data of Wave diagram graphic
7. Cursor point data register functions in data of Wave diagram graphic (maximum 10 points)
8. Favorite settlement functions of the color and kind of lines for back of graphic, grid line, wave etc
9. Display functions of wave diagram graphic data placed side by side (A4 sheet min. 1 wave~ max. 25 waves)
10. Display functions of piled wave diagram graphic data (Max. register number : 10 data)
11. Functions of register the cursor point data in the piled display
12. Make the report by the functions of export to EXCEL
  - 12-1 EXPORT of each test results
  - 12-2 EXPORT of lists for test results•totalled results
  - 12-3 EXPORT of Wave log data CSV type
  - 12-4 EXPORT of display placed side by side
  - 12-5 EXPORT of display piled
13. Functions of Clip Board Copy in the display of measurement screen
14. Step movement and continuous movement•Stop at 0.01mm, 0.10mm, 1.00mm
15. Functions of language changeover \*1 (Japanese•English•Korean•Chinese)

## Correspondence OS\*2

Microsoft Windows OS : Windows XP SP3 or more. • Windows VISTA SP2 or more. • Windows 7 or more.

Microsoft Office : Office 2003 SP3 or more. • Office 2007 SP2 or more. • Office 2010 or more.

\* A personal computer and Office are not included in a this set.

\*1 The personal computer of use needs to be supporting language.

\*2 EXCEL, Microsoft Windows \*\*\*\* and Microsoft Office \*\*\*\* is a registered trademark of U.S. Microsoft Corp.

## DigiTech Corporation Limited.

HEAD OFFICE  
KINKI BLD. 3F, 3-20-11, HIGASHIOBASE, HIGASHINARI-KU,  
OSAKA, JAPAN 537-0024  
TEL : +81-6-6973-5861 FAX : +81-6-6973-5862  
URL : <http://www.dt-digitech.jp>