

株式会社エクト

www.ectinc.co.jp

ECT

Thrive
Contribution
Evolution

Electronic Tape Dispensers

Standard M Series



Safety-oriented MS Series



Compatible with strong adhesive tape TDA Series



Other products on non-adhesive materials and protective films



貼るプロ

『Taping Enhance Productivity』

ELM[®] by ECT Inc.

ELM[®] by ECT Inc.

Tape Dispensers

~ Electronic tape dispenser born in Japan ~

Shorten time for tapping job by your hand.

ELM[®] is the trademark of ECT Inc.

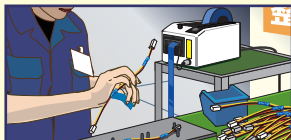
Where the electronic tape dispenser is used



Reduce production cost and increase efficiency by using of electronic Tape Dispenser



Taping of electronic circuit, semiconductor substrate factory
Insulation treatment in the electronics industry, fixing parts, temporary fastening at inspection, taping, masking, etc.



Taping of electrical parts factory:
Binding and fixing of wire harness, Terminal treatment, Insulation coating etc.



Taping of automobile assembly factory:
Module, harness, interior trim parts, cover mat, exterior parts mounting, waterproof airtight treatment, etc.



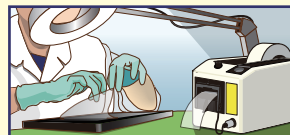
Taping of pharmaceutical factory:

Individual packaging box, sealing of cup containers, taping detection tape sticking etc.



Taping of logistics, distribution processing:

Cellophane tape to assembly packaging, pasting of vouchers using OPP tape and fixation of accessories etc.



Protective film for liquid crystal display factory:

Attaching surface protection film, masking with film etc.



Taping of product assembling factory:

Temporary fixation of moving parts before shipment, lamination of housing parts, fixation of protective materials, waterproof material, soundproof material tape sticking

Electronic Tape Dispensers

Benefits of Using Our Dispensers



Productivity improvement



Product image improvement



Labor cost reduction



Keep original adhesion



Material cost reduction



Environment friendly



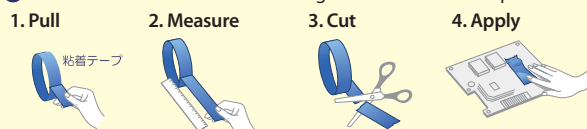
Stressful work improvement



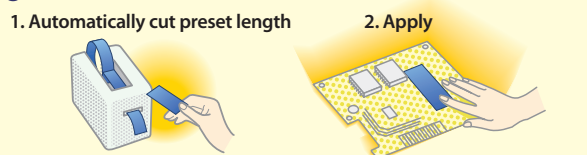
Uniform finish

Comparison image of conventional method and after introduction of electronic tape dispenser

● The conventional method: Causing the worker's wrist be painful.



● After introduction: Reduction of man-hours and quality improvement



Electronic Tape Dispensers

M Series



M-1000 **RECOMMENDED**

Standard model for 50mm width Adhesive Tape
Adjustable in 1mm interval (30~999mm)
Auto Feed and Auto Cut

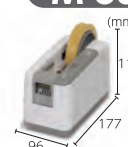


M-2000

M-1000 basic function with length memory (upto 3 different lengths)



M-800



For max. 24mm width Film type adhesive tape use
Auto feed and manual cut
Adjustable tape length (S·M·L)
Can be used as cordless type



MS Series



MS-1100 **RECOMMENDED**

M-1000 standard function with Safety Shutter PATENT



MS-2200

Safety shutter with additional length memory function (upto 3 different lengths).



Preset mode
Preset length selected

Memory 1 50mm
Memory 2 60mm
Memory 3 70mm

Loop mode
Feed preset length in order

Memory 1 50mm
↓
Memory 2 60mm
↓
Memory 3 70mm

* ±2mm to 3mm error may be observed depending on the type of tape or usage environment.

* Even with the recommended type may not work due to its characteristics.

Heavy Duty Models

For more information, please contact: info@seal-ind.com



TDA Series



TDA080 **RECOMMENDED**

Heavy duty type
For 80mm width
High torque motor allows longer usage time and use of strong adhesive tapes

TDA080-M

TDA080 with lengths memory function (upto 5 different lengths)
Loop mode / Preset mode

TDA080-NS

Non-sticky model
Specially treated roller -resistant to adhesive
Foam tape, Double-sided tape



TDA150

Heavy duty type
For 150mm width
High torque motor allows longer usage time and use of strong adhesive tapes

TDA150-M

TDA150 with lengths memory function (upto 5 different lengths)
Loop mode / Preset mode

※ **TDA080**
when use **auto mode** tape feed from 70mm.

※ **TDA150**
when use **auto mode** tape feed from 100mm.

Other Models



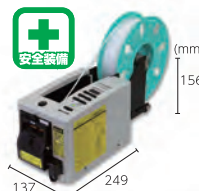
TDA080-NMSR

Designed for dispense of protect film.
For width under 80mm.

TDA150-NMSR

Designed for dispense of protect film.
For width under 150mm.

MS-2500



For Non-stick material
(conductive wire, tube, ribbon, etc.)

Apply for
conductive wire
(dia. under 2mm.)

Option Parts (Examples)

Various typical parts exemples



#254/255 Cutter set
for replacement for the same for M-1000,
MS-1100 etc.



**#902
Reel stand 24**
Accept tape roll outer dia. at Max. 240mm and
width at 5 - 50mm.



**#533
Separating Roller Holder Unit (Flat)**
for replacement for the same for M-1000,
MS-1100 etc.



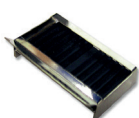
**#903
Magnetic tape guide**
for prevent meandering of tape when feeding



**#533-1
Separating Roller Holder Unit (Knurling)**
for replacement for the same for M-1000,
MS-1100 etc.



**#905
Reel stand 35**
Accept tape roll outer dia. at Max. 350mm and
width at 5 - 75mm.



**#535-P
Attachment for weak adhesive tape**
for weak adhesive tape when feeding



**#107N
Reel for Narrow Tape**
Use for tape width at 5 - 20mm



**#550-1
Auto Feed Cutter Unit**
for replacement for the same for M-1000,
M-2000 etc.



**#LR0028
Liner remover**
for removes bottom liner for tapes.
Tape width at 10 - 28mm

Product Modification to match your own usage (Examples)

Double Sensor: for 2 rolls of tape use at the same time.

Protect Film Spec: for protect film use with width upto 50mm.

Narrow Tape Spec: for narrow adhesive tape with width at 5~25mm.

External Terminal: for electronic tape dispenser work together with automatic assembling line such as FA (external signal input maximum 7P)

Extra short: for extra short piece tapes from 5mm (please make sure to use tweezers for picking up tapes).

Electrostatic removal spec: for thin PP adhesive tape etc. which is extremely easily charged with static electricity.

Please Contact us for modification:



Product Specifications

Model no.	Tape width (mm)	Pre-set cut length (mm)	Tape Feeding	Tape Cutting	Cut edge	Memory function	Max tape roll outer dia. (mm)	Applicable tapes	Remar(s)
M-800	7~24	S ◦ M ◦ L ◦ OFF	Auto	Manual	Straight		135	Cellphane tape, PP tape, Mending tape, Polyester tape.	Battery / AC adaptor (Not include) Operated for light task
M-1000	7~50	20~999	Auto	Auto	Straight		170	Temporary fixing tape, Filament tape, Kraft tape, Cloth tape, Double sided tape, Cellphane tape, OPP tape, PVC tape, Masking tape etc.	AC, for Moderate task
M-2000	7~50	20~999	Auto	Auto	Straight	3	170		M-1000 basic with Length memory function
MS-1100	7~50	30~999	Auto	Auto	Straight		170	Temporary fixing tape, Filament tape, Kraft tape, Cloth tape, Double sided tape, Cellphane tape, OPP tape, PVC tape, Masking tape etc.	M-1000 with safety shutter
MS-2200	7~50	30~999	Auto	Auto	Straight	3	170		MS-1100 with Length memory function
TDA080	13~80	40~9,999	Auto	Auto	Straight		230	Filamenr tape, Kraft tape, Cloth tape, Temporary fixing tape, Double sided tape, OPP tape, PVC tape etc.	AC, Heavy duty type for 80mm width
TDA080-M	13~80	40~9,999	Auto	Auto	Straight	5	230		TDA080 with Length memory function
TDA080-NS	13~80	40~9,999	Auto	Auto	Straight		230	Foam tape, Double sides tape without basic material	Non-sticky model
TDA150	13~150	40~9,999	Auto	Auto	Straight		230	Filamenr tape, Kraft tape, Cloth tape, Temporary fixing tape, Double sided tape, OPP tape, PVC tape etc.	AC, Heavy duty type for 150mm width
TDA150-M	13~150	40~9,999	Auto	Auto	Straight	5	230		TDA150 with Length memory function
M-1000 for surface protection film	7~50	20~999	Auto	Auto	Straight		170	Surface protection film	M-1000 with Protect film spec
TDA080-NMSR	13~80	40~9,999	Auto	Auto	Straight		230		TDA080 with Protect film spec
TDA080-NMSR	13~150	40~9,999	Auto	Auto	Straight		230	Surface protection film	TDA150 with Protect film spec
MS-2500	7~50	20~999	Auto	Auto	Straight		170	Conductive wire, Twist tie, Unity wiere, Heat shrink tubing, string, ribbon etc.	Non-sticky model

* The appearance or specifications is subjecto to change without prior notice.

ECT Inc. Tokyo Head office

2-10-3-407 Narimasu Itabashi-Ku, Tokyo, 175-0094 JAPAN
Phone: +81-43-214-4882 Fax: +81-43-214-4883

ECT Inc. Hong Kong office

Room 1101, 11th Floor, Fashion Centre, No, 51-53 Wing Hong Street, Lai Chi Kok, Kowloon, Hong Kong
Phone: +852-2317-7113 Fax: +852-2317-7611

* For any questions about our products, please email to: info@seal-ind.com

